

etherea^{MX}

#1 LASER PLATFORM
IN THE WORLD'S 2ND
LARGEST AESTHEATIC
MARKET.

70+

TREATMENT INDICATIONS
AND GROWING

**SUPERIOR
SERVICES**

TO MEET
YOUR NEEDS

**MARKET
LEADER**

THE #1 PLATFORM
IN ONE OF THE
LARGEST AESTHETIC
MARKETS





#1 LASER PLATFORM
IN THE WORLD'S 2ND
LARGEST AESTHETIC
MARKET.

**2-YEAR
WARRANTY**

OPERATE WITH
CONFIDENCE AND
PROTECT YOUR
BUSINESS

A VERSATILE
SYSTEM FOR
THE **GLOBAL
MARKET**

**MULTIPLE
HANDPIECES**
WITH MULTIPLE
OPTIONS



#1 LASER PLATFORM IN THE WORLD'S 2ND LARGEST AESTHETIC MARKET.

- A **LASER** platform with **7 technologies** and **70+ tx indications**.
- Over a **1,000 systems** installed worldwide
- **Market share leader** in the 2nd largest aesthetic market worldwide
- **Maximum ROI** in an all-in-one system with numerous available handpieces.
- 2-year warranty with **full-time support**
- Number one Brazil with more systems sold than all others combined.



ETHEREA® was born in Brazil and expanded globally around the world in just over 9 years, spreading to Europe, then Asia, and now arriving in North America. Since 2009, ETHEREA® has continued to grow, incorporating business models that have made the platform a remarkable sales success: from the annual ETHEREA Users' Meeting aimed at developing and expanding clinical practice with technology, to after-sales assistance and service, creating a solid foundation for any medical practice.





 etherea^{MX}

 etherea^{MX}

QUALITY, PERFORMANCE AND LONGEVITY



A NEXT GENERATION SYSTEM:

With additional technologies and expanded indications, ETHEREA-MX® is a valuable asset for any practice.



MANUFACTURED TO GLOBAL STANDARDS:

Manufactured to ISO/UL standards and having obtained FDA, CE, CAN/CSA and ANVISA CERTIFICATIONS, ETHEREA-MX® is a platform suited for the global market.



ESTABLISHED TECHNOLOGIES, CUTTING EDGE EXECUTION:

Efficient fractional delivery, reducing residual thermal damage. Square-wave pulse technology that provides safe and improved outcomes. Versatile treatment options from an all-in-one plug and play handpiece system. These are just some examples of the Etherea MX advantage.



STRONG FINANCIAL SUPPORT FOR THE GLOBAL MARKET:

VYDENCE, born from the acquisition of Brazil's leading aesthetic company by Adavium, a US based corporation. With significant backing from some of the largest high-tech venture capital firms in the US, Adavium and Vydence have the capability and resources needed to ensure Etherea's success in the global market, now and for years to come.

GREATER VERSATILITY WITH UNIQUE ALL-IN-ONE FILTER AND SPOT TECHNOLOGY.

ATHENA

INTIMATE LASER TREATMENTS
FOR WOMEN'S HEALTH AND
WELLNESS

SPOT INLIFT

INTRAORAL LASER
TECHNOLOGY FOR FACIAL
SKIN TIGHTENING

IPL-SQ®

IPL TECHNOLOGY WITH A
DIGITALLY-CONTROLLED
PULSE WIDTH

DUALMODE®

DUAL-EFFECT ER:YAG
AN IMPROVED
COAGULATION EFFECT

INTENSE-IR®

HI-POWERED INFRARED LIGHT
FOR SKIN TIGHTENING OF THE
BODY AND FACE

PRODEEP®

FOR DEEP SUBDERMAL
FRACTIONAL LASER
TREATMENTS

ACROMA®

DUAL-WAVELENGTH
FRACTIONAL
Q-SWITCHED LASER

LONGPULSE®

ND:YAG LASER WITH
VARIABLE PULSE MODES

GOSMOOTH®

GOLD STANDARD TECHNOLOGY
IN NON-ABLATIVE LASER RESURFACING

In addition to offering the best and most complete IPL technology on the market, with a total of 5 different wavelengths, ETHEREA-MX® LASER handpieces also all feature adjustable spot sizes, increasing the range of usage and taking the concept of versatility to a new standard within your clinical practice.

A SINGLE PLATFORM WITH OVER 70 TREATMENT INDICATIONS.

	IPL-SQ	INTENSEIR	LONGPULSE	ACROMA QS	PRODEEP	GOSMOOTH	DUALMODE
acne vulgaris	•		•				
active acne	•						
scars in general	•				•	•	•
atrophic scars					•	•	
hypertrophic scars							•
erythema reduction in post-surgical or post-traumatic scars	•		•		•		
leukoderma	•						•
vitiligo	•						
psoriasis treatment and control	•						
pigmentary lesions in general	•			•			•
ephelides	•			•			•
senile and solar lentigines	•			•			•
café-au-lait spots	•			•			
hyperpigmentation	•			•			
melasma				•	•	•	
removal of black tattoo pigment				•			
removal of red/orange tattoo pigment				•			
angiomas			•				
spider angiomas	•		•				
Becker's nevus				•			
cavernous hemangioma	•		•				
cherry hemangioma	•		•				
facial telangiectasias	•		•				
telangiectasias on the body and limbs			•				
nevus of Ota				•			

	IPL-SQ	INTENSEIR	LONGPULSE	ACROMA QS	PRODEEP	GOSMOOTH	DUALMODE
erythematous rosacea	•		•		•		
hemangioma in general	•		•				
telangiectasias and vascular lesions of the lower limbs			•				
nevus, general	•			•			•
nevus spilus	•		•				
poikiloderma of Civatte	•		•				
port-wine stains	•		•				
reticular veins			•				
rosacea treatment and control	•		•				
spider hemangiomas	•		•				
telangiectasias in general	•		•				
vascular lesions in general			•				
venous lakes			•				
venous malformations in general			•				
fine wrinkles and expression marks	•				•	•	•
photobiostimulation	•				•	•	
perioral wrinkles	•				•	•	•
periorbital wrinkles	•				•	•	•
fractional resurfacing							•
intraoral lifting in malar region							•
red stretch marks	•		•		•		
white stretch marks					•	•	•
vulvovaginal atrophy							•
vaginal dryness							•

	IPL-SQ	INTENSEIR	LONGPULSE	ACROMA QS	PRODEEP	GOSMOOTH	DUALMODE
urinary incontinence, female							•
postmenopausal atrophic vaginitis							•
intimate rejuvenation in general							•
women's intimate, labia whitening							•
epilation in all phototypes	•		•	•			
pseudofolliculitis barbae	•		•				
actinic cheilitis	•						
excision of benign tumors							•
excision of skin cysts							•
superficial skin lesions							•
keratoses				•			•
seborrheic dermatitis							•
seborrheic keratosis				•			•
acrochordons							•
excision procedure by surgical ablation and/or coagulation of soft tissue							•
warts			•		•		•
HPV lesions			•				•
control of recurrent oral thrush							•
atopic dermatitis	•						
face/neck flaccidity		•			•		
body flaccidity		•					
skin tightening		•			•	•	
LASER toning			•	•			

IPL-SQ[®]

QUICK VIEW

- **Proprietary SQUARE-WAVE PULSE[®]** technology with microprocessed pulses for enhanced safety and results;
- **A total of 5 cutoff filters available in the plug-and-play model, at 400, 540, 580, 640 and 695 nm**, considerably broadening the range of indications and versatility in a single handpiece;
- **Special VascuTip[®] spots** in all wavelengths, working with the utmost efficiency in the treatment of localized lesions and less accessible regions;
- **Built-in sapphire contact cooling system**, to enhance patient comfort and procedure safety;
- 5- to 100-ms pulses for **safety in the treatment of darker phototypes** (Fitzpatrick IV-VI), and **effective outcomes for vascular lesions** of different sizes and depths;
- **Repetition rates of up to 2 Hz and a broad treatment area**, measuring 4.8 cm², making procedures much quicker;



All-in-one cut-off filters;
400, 540, 580, 640 and 695 nm

INTENSE-IR[®]

QUICK VIEW

- **Non-ablative, non-invasive technology with no downtime**, already well-established in Brazil and worldwide, incorporating the latest developments in light-based systems;
- **Built-in pre/post-cooling system** that ensures the safety and comfort of the procedure while also offering a more aggressive treatment option;
- **Versatile, recommended for face and body treatments**, with combined applications in stamping and dynamic mode, INTENSE-IR[®] is the only product on the market that can easily adapt to the specific needs of the patient and the treatment itself;



INTENSE-IR®



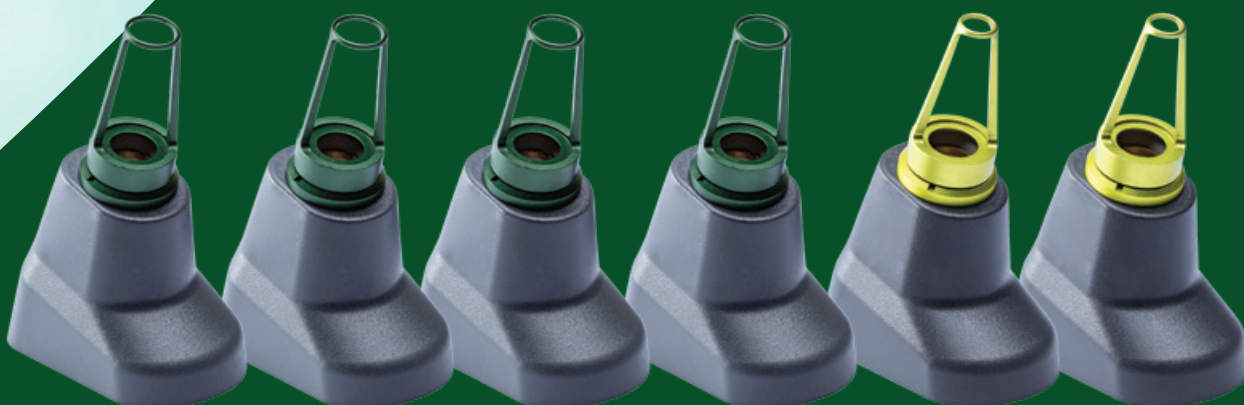
ACROMA-QS®

QUICK VIEW

- **ACROMA-QS® technology is safe for treatment of all phototypes without restriction by time of year**, which allows you to offer your patients a real LASER toning solution even at the height of summer!
- **Therapeutic option, also for non-ablative fractional rejuvenation with ACROMA-QS®**, through a quick (lunch time) and virtually painless procedure with no downtime, great results for treatments of the body and face;
- **An excellent investment in Q-switched LASER technology**, adding new possibilities to your clinical practice and opening up a range of new options for cosmetic and therapeutic treatments;
- **Effective in tattoo removal, treatment and control of melasma and pigmentary lesions** – with indications extended to nevus, café-au-lait spots, lentigines, melanosis, ephelides, post-inflammatory hyperpigmentation and seborrheic keratoses;
- **ACROMA-QS® is a unique handpiece with two wavelengths** – 1064 and 532 nm – with greater energy delivery per pulse providing improved efficacy in the removal of pigmentary lesions and artificial multicolored pigments;



ACROMA-QS®



Available spots: @1064 nm: 3, 5 and 7 mm; @532 nm: 3 mm; optional spots: @1064 nm: fractional 9 mm and 100 mtz/cm²; @532 nm: 5 mm;

LONGPULSE®

QUICK VIEW

- **Due to greater penetration of the wavelength and absorption by hemoglobin**, LongPulse LASER offers the utmost precision, efficacy and safety for the treatment of vascular lesions in veins and vessels of different sizes and depths;
- **The true LongPulse® technology, with longer pulse times of up to 60 ms**, results in prolonged heating of the treatment target point, increasing the vessel's internal temperature and improving the response;
- **With spot sizes of 2, 3, 6 and 9 mm in diameter and maximum fluency of up to 500 J/cm²**, LongPulse® offers maximum range for the treatment of various medical conditions related to vascular malformations on the face and limbs;
- **LongPulse® is a safe therapeutic option with increased clinical efficacy**, and scientifically proven results without contraindications, risk of complications or downtime, as can occur with other conventional techniques such as foam sclerotherapy;
- **Unique Dynamics technology for thermal peeling, offering**, variable pulses of 0.3 to 1 ms, effectively adding a technological solution to expand the range of clinical indications to include rejuvenation, rosacea and onychomycosis;



Available spots: 2, 3 and 6 mm;
optional spots: 9 mm;

PRODEEP®

QUICK VIEW

- **ProDeep®: LASER effect with 9x greater depth of penetration** when compared to other non-ablative LASERs available on the market, ensuring treatments with much greater clinical efficacy.
- **Wide variation in treatment intensity with ProDeep®**, combining higher intradermal heat in subdermal tissue, pulse durations in the range of 3-20 ms, micro-fractionated lenses and collimated beams, providing a unique treatment option;
- **ProDeep® has revolutionized the market**, by offering a non-ablative fractional LASER option with excellent results from only the first sessions, while still being a highly safe technology with virtually no downtime. A great option for body procedures;
- **Greater safety, efficacy and usability with a new high quality optical fractionation system**, square spot formats, smaller micro-fractionated beams and greater spacing between spots;
- **The legacy of a technology brought by ProDeep®**, a LASER technology widely used and approved by renowned doctors, with numerous success stories that prove its effectiveness;



PRODEEP®

available spots: fractional 8 mm and
100 mtz/cm², fractional 10 mm and
400 mtz/cm², and 6 mm;



GOSMOOTH®

QUICK VIEW

- GoSmooth® incorporates **the world's gold standard in rejuvenation technology** and adds a new treatment proposition to ETHEREA-MX;
- **True non-ablative fractional resurfacing** with GoSmooth® acts with precision on the epithelial tissue layer while generating a homogeneous and residual intradermal thermal effect;
- **Prevents, maintains and treats all aging signs**, and is indicated for the treatment of wrinkles, acne scars, melasma, stretch marks and various skin irregularities;
- Especially designed to **ensure therapeutic efficacy and safety in procedures for any region of the body** in men or women;
- **Provides visible results from the first session** and offers a safe procedure with great clinical efficacy for all skin types, without disrupting daily activities;
- **High-quality beam micro-fractionation** through an improved precision lens system, ensuring a much safer use of GoSmooth® in practice;
- GoSmooth® places new therapeutic possibilities, at your disposal, a **high-value technology with great versatility and real results.**



Available spots:
fractional 8 mm and
100 mtz/cm², and
fractional 10 mm and
400 mtz/cm²



DUALMODE®

QUICK VIEW

- **DualMode® features a unique double pulse (stacking) system with vaporization and coagulation effects in the same shot** thus increasing the formation of RTD on the treated tissue in order to attain the same beneficial results achieved with CO2 LASERS;
- **LASER peel:** high LASER absorption by water at a wavelength of 2940 nm, combined with purely ablative shots (300-500 ms), results in controlled surface treatments with minimal downtime;
- **Compared to CO2 LASER, DualMode®** offers treatments with less risk of complications and adverse effects, in addition to reduced downtime and rapid post-treatment improvement. All with the same safety, benefits and effectiveness;
- **New optimized LASER micro-fractionation system**, allowing for the generation of smaller beams with greater energy density, increasing the relative irradiance of the DualMode shot, thus achieving greater depth of penetration while reducing the risk of hyperpigmentation;
- **DualMode® allows a combination of treatments with different levels of aggressiveness**, using fractional lenses at 100 and 400 mtz with different diameters, widely variable pulse durations – 300 us to 5 ms – and repetition rates of up to 1.5 Hz;
- **A LASER peel in less than 1 minute**, using a frequency of up to 5 Hz in SingleMode, ETHEREA-MX DualMode technology offers a quicker treatment proposition that greatly increases the efficiency of the platform
- **DualMode® INLIFT®:** a new intraoral treatment option for the ETHEREA-MX® platform, indicated for a tightening and lifting effect through the power of LASER technology, in a virtually painless treatment, without downtime, producing excellent results;
- **DualMode® ATHENA®:** a treatment method for the female anatomy, offering a minimally invasive and virtually painless procedure that is safe, precise, downtime-free and provides a high level of satisfaction through clinically proven results;



available spots: inLift spot for intraoral/LASER tightening, plus fractional 8 mm and 100 mtz/cm², fractional 8 mm and 400 mtz/cm², and 6 mm; optional spots: 2,5 mm;



ATHENA90+ and ATHENA360 for women's intimate LASER treatment;

This product may not be available for sale in all countries. Please contact us with any questions about this subject. VYDENCE® reserves the right not to sell the product in countries where it has no authorized distribution and/or legal certification by the relevant regulatory agencies.

TECHNICAL SPECIFICATIONS

	ETHEREA-MX
INPUT VOLTAGE	110-220 V~
OPERATING FREQUENCY	50/60 Hz
MAXIMUM CONSUMPTION	2,600 V. A.
DEVICE DIMENSIONS	W: 43 D: 51 H: 104 cm
WEIGHT	53 Kg

TECHNICAL SPECIFICATIONS

	IPL-SQ®
IPL WAVELENGTH	400-1200 nm
CUT-OFF FILTERS AVAILABLE	400, 540, 580, 640 and 695 nm
SPOT SIZE	40 x 12 mm
VASCUTIP™	Ø 8 mm and 12 x 12 mm
MAXIMUM ENERGY	33 J/cm²
PULSE WIDTH	5 to 100 ms
COOLING SYSTEM	built-in sapphire contact-cooling
REPETITION RATE	up to 2 Hz

TECHNICAL SPECIFICATIONS

	ACROMA-QS®
LASER WAVELENGTH	Nd:YAG 1064 nm KTP 532 nm
AVAILABLE SPOT SIZES	1064 nm 3, 5, & 7 mm 1064 nm 9 mm, 100 mtz/cm² fractional lens array 532 nm, with 3 & 5 mm
MAXIMUM ENERGY	1,500 mJ
PULSE WIDTH	20 ns
REPETITION RATE	up to 5 Hz

TECHNICAL SPECIFICATIONS

	PRODEEP®
LASER WAVELENGTH	Nd:YAP 1340 nm
AVAILABLE SPOT SIZES	6 mm, collimated lensing 8 mm, 100 mtz/cm² fractional lens array 10 mm, 400 mtz/cm² fractional lens array
MAXIMUM ENERGY	200 mJ/mtz
PULSE WIDTH	3 to 20 ms
INTEGRATED COUPLING PLUG SYSTEM	air-cooling sytem adapter available
REPETITION RATE	up to 2,5 Hz

TECHNICAL SPECIFICATIONS

	DUALMODE®
LASER WAVELENGTH	80058580021
AVAILABLE SPOT SIZE	Ø 8 mm, 400 mtz/cm² fractional lens array Ø 8 mm, 100 mtz/cm² fractional lens array Ø 2.5 and 6* mm collimated lensing INLIFT® for introoral laser treatment
AVAILABLE ACCESSORIES	ATHENA90+, ATHENA360 fractional lens array & collimated lensing
MAXIMUM ENERGY	8 J
PULSE WIDTH	300 µs to 400 ms
INTEGRATED COUPLING PLUG SYSTEM	smoke evacuator sytem adapter available
REPETITION RATE	up to 5 Hz

TECHNICAL SPECIFICATIONS

	INTENSE-IR®
IR WAVELENGTH	850-1800 nm
MAXIMUM ENERGY	130 J/cm²
PULSE WIDTH	3-10 s
SPOT SIZE	30X12 mm

TECHNICAL SPECIFICATIONS

	LONGPULSE®
LASER WAVELENGTH	Nd:YAG 1064 nm
AVAILABLE SPOTS SIZES	2, 3, 6 & 9* mm
MAXIMUM ENERGY	500 J/cm²
PULSE WIDTH	0.3 to 60 ms
INTEGRATED COUPLING PLUG SYSTEM	air-cooling sytem adapter available
MODE OF OPERATION	LONGPULSE, DYNAMICS
REPETITION RATE	up to 10 Hz

TECHNICAL SPECIFICATIONS

	GOSMOOTH®
LASER WAVELENGTH	Er:GLASS 1540 nm
AVAILABLE SPOT SIZES	8 mm, 100 mtz/cm² fractional lens array 10 mm, 400 mtz/cm² fractional lens array
MAXIMUM ENERGY	95 mJ/mtz
PULSE WIDTH	10 and 15 ms
INTEGRATED COUPLING PLUG SYSTEM	air-cooling sytem adapter available
REPETITION RATE	up to 1 Hz



An Adavium
Medical Company

VYDENCE® Exclusively distributed in Benelux by:

Medi-Invest nv
Georges Wittouckstraat 20 - 1600 Sint-Pieters-Leeuw BELGIUM
+32 (0)2 381 27 00 | info@medi-invest.eu | www.medi-invest.eu

