



# skin cooling

feel the difference

summer





Cold air for maximum  
patient comfort

## Ultramodern technology and over 25 years of experience

Cryo is the perfect system for cooling the skin during laser applications and injections of all types. The cold air device provides lasting pain reduction and prevents thermal damage to the skin during laser and IPL applications.

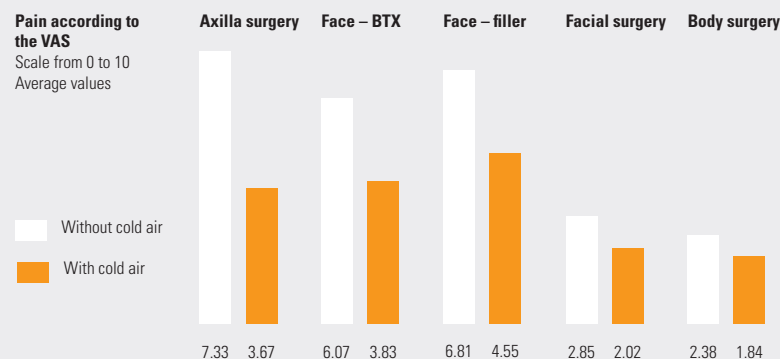
Unlike in other cooling methods, such as contact cooling, cooling sprays, or ice packs, the skin can be cooled with Cryo before, during, and after the laser application without impeding the effect of the laser.

## Zimmer MedizinSysteme Cryotherapy expertise, made in Germany

Cooling the skin with cold air is a widely used technique in dermatological laser therapy. We investigated the influence of cold air cooling with various skin temperatures on the therapeutic results in treatments for telangiectasia in the facial region with pulsed dye laser.

### Pain reduction using cold air during injections

Dr. Markus Steinert, Dr. Steinert Laser Clinic, Biberach, Germany



#### Study design, materials, and methods

The treatment was performed with and without the application of cold air in a split-face comparison. The intensity of the air stream corresponded to level 5 of the Cryo device from Zimmer MedizinSysteme (range of levels 1- 9). Each patient served as his/her own control, since the procedure was performed symmetrically on both sides of the body, however the cold air treatment was performed on only one side. The subjective pain indicated was measured using an analogue scale from 0 – 10 (0 = no pain, 10 = worst pain imaginable).

The pain event was considered to be the prick with the injection needle for the administration of BTX, hyaluronic acid, or a local anaesthetic.

#### Results

All patient groups had significantly less pain after the application of cold air than without cold air. This result also corresponds to the well-studied pain-inhibiting effect of cold air, for example, in pain therapy or dermatological laser and IPL application. The inhibition of pain was particularly pronounced in the nonsurgical treatments with injections of botulinum toxin and hyaluronic acid fillers. The cold air reliably reduces pain during any type of injection.



# The new Cryo

perfected from A to Z

## Maximum operating convenience

### User-friendly design

- Energy-saving eco standby operation
- Storage space for 100 Favourites
- High-resolution 10-inch touch display
- Colours and presets as desired

## Easier to operate than ever

### Runs effortlessly for you

- Software reminder if the water tank is full
- Air filter can be quickly and easily changed
- Magnetic tube attachment
- Automatic maintenance reminder



## Form meets function

### Ergonomic & stylish

- Easier on the back due to the ergonomic height
- Swivelling spring arm allows one-hand operation
- Quiet operation
- Space-saving with a narrow footprint
- A real eyecatcher in the modern practice

7



30°C





# 100

Favourites programmes can be stored

# 9

Fan levels

# 250

cm

Length of the treatment tube

# 1.2

kW

Max. power consumption  
during therapy

# 0,55

kWh\*

Eco standby  
operation

MD

# 60

kg  
weight

# 106

H

# 50

W

# 56

L

Housing  
dimensions (cm)

## Energy- and cost-efficient

Operating the new Cryo 7 entails only low consumption costs for you. The new standby mode additionally minimises energy costs.

Cryo 7 is designed for reliable use all day long. The defrosting function and software-controlled monitoring of the amount of defrost water ensure smooth operation. In addition, the air filter is easily accessible and can be quickly replaced if soiled.

Numerous technical innovations allow the Cryo 7 to be operated even more quietly. This makes the treatment significantly more pleasant for everyone: for your patients and also for the medical staff.

# Cryo<sup>pro</sup>

With UV filter for nearly germ-free cold air

## New and more up-to-date than ever: Nearly germ-free™ cold air thanks to the UV filter

With its UV module, the new Cryo pro minimises germs in the cold air. It also features an improved air filter which already ensures significantly fewer particles in the aspirated air. As a result, the new cryotherapy device significantly improves hygiene during each laser application.



UV-C

### What is UV?

UV-C radiation is a known disinfection method for air, water, and non-porous surfaces. It is frequently used in air ducts for disinfecting air.



### Why is this so important?

UV-C radiation is proven to inactivate the SARS coronavirus and could also be effective in the inactivation of SARS-Cov-2. The use of UV-C means disinfection without harmful chemicals.

UV

### Cryo pro protects sensitive areas of the body

Additional cleaning of the environmental air supports the treatment of sensitive areas, such as in the face. The use of ozone-free lamps prevents irritation of the respiratory tract.

Optional support arm  
Description valid for the Cryo 7 variant



**coming soon**



**1.2** kW

Max. power consumption during therapy

**0%**

Ozone from the UV lamp

**0,55** kWh\* Eco standby operation

**61**

kg weight

**106** H  
**50** W  
**56** L

Housing dimensions (cm)

**100**

Individual programmes can be stored

**9**

Fan levels

**250**

cm

Length of the treatment tube

## Sets new standards in operating convenience

All of the important operating elements are clearly arranged and thus easy to reach at an ergonomic height. This allows successful operation from the very start.

And with the optional support arm, you always have one hand free. In addition, the lightweight tube can be connected to various laser handpieces using nozzles or adapters. This greatly facilitates treatment with two devices at the same time.

The user can precisely adjust the air stream for each patients.



# Cryo

# 6

## Treat painlessly at -30°C

### Economical

#### **Saves energy and cuts costs**

- Room air is filtered and cooled through a closed cooling circuit to -30°C
- Energy-saving standby operation
- Cost-effective: no consumables



### Simple maintenance

#### **Time for important tasks**

- Air filter is easily accessible and easy to vacuum if soiled
- The amount of defrost water is automatically monitored
- The defrosting function ensures smooth operation



### Ergonomic, stylish, high-performance

#### **Designed for modern practice**

- Large glass shelf plate
- High-performance: all-day operation possible
- An optional support arm enables hands-free operation
- Clips and adapters can be connected, for example, for single-handed laser treatment

# -30°C







## Simple operation

With its clear display, the Cryo 6 can be operated quickly and intuitively. Six pre-set programmes can be selected using the convenient control buttons. Select program, press "Start" and you're ready to begin!

An optional support arm facilitates hands-free operation.

The lightweight tube can be connected to various laser handpieces through nozzles or adapters. The air stream can be easily controlled by the user.

- 6** programmes with preset parameters (air stream, treatment time)
- 3** user-defined programmes
- 1** user-defined Favourites programme

**200** cm Length of the treatment tube

**1.7** kW Max. power consumption during therapy

**1** kWh\* Standby operation

**64.5** H  
**39** W  
**68** L

Housing dimensions (cm)

**MD**

Fan levels

**9**

**60**

kg weight

# Cryo

# Mini

## Efficient application



### Satisfied patients

The simultaneous application of cold air in combination with laser or IPL applications not only reduces pain but also prevents thermal damage to the skin which also enables treatments over a longer period.

CryoMini needs only normal room air which is filtered and cooled to -10°C. The device is virtually maintenance-free and there are no consumables. The shelf plate is ideal for holding devices, such as laser and IPL systems.

**180**

cm

Length of  
the treatment tube

**MD**

Fan levels

**9**

**65**<sup>H</sup>  
**33.5**<sup>W</sup>  
**60**<sup>L</sup>

Housing  
dimensions (cm)

**1.5** kW

Max. power consumption  
during therapy

**35**<sup>.5</sup>

kg  
weight



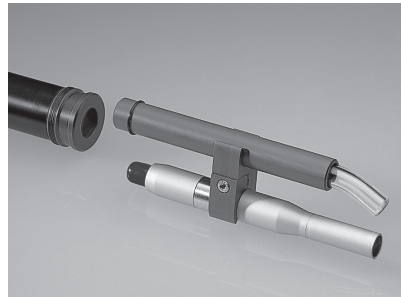
# Extras

## Optional accessories



### Support arm

An optional support arm facilitates hands-free operation.



### Laser adapter

To secure the treatment tube to your laser – brings the cold air precisely to the site of pain.



### Treatment tube

Neoprene and lightweight treatment tube – optionally in 2 m & 3 m lengths. (Cryo 6 / CryoMini).

## Basic equipment



### Water tank



### Air filter (Cryo 7 / Cryo pro)

# Zimmer Group worldwide

**ISO 13485** certified

**500**

employees

active in **111** markets

**50** years of excellence  
in medicine

**2** production facilities  
in Neu-Ulm



Follow us

on the market since **1969**

**250**

distributors worldwide

**8** branches  
USA | FR | A | BE | CH | CN | IT | UAE



Zimmer MedizinSysteme GmbH  
Junkersstraße 9  
89231 Neu-Ulm, Germany  
Tel. +49 7 31. 97 61-0  
Fax +49 7 31. 97 61-118  
info@zimmer.de  
www.zimmer-aesthetics.de

