

# INDICATIONS

## BROAD RANGE OF APPLICATIONS

Port Wine Stains | Pigmented Lesions | Wrinkle Reduction | Rosacea Hemangiomas | Telangiectasia  
| Café au Lait | Skin Rejuvenation | Facial | Telangiectasias | Epidermal Pigments | Large Pores |  
Blackheads | Leg veins | Hair Removal and more!

## Variety of Cartridges available

IntelliCartridge system  
2, 3, 5/7mm, 8/10/12mm, 12/14/16mm & FRX, 3X10 Spot size



# ATTRIBUTES

Wavelength(s)	532 nm / 1064 nm (KTP / Nd:YAG)
Aiming beam	635 nm / ≤ 5 mW
Pulse Energy (Max Fluence)	532 nm mode: Max. 13.5 J 1064 nm mode : Max. 100 J
Pulse Width (ms)	532 nm mode : Max. 40 ms 1064 nm mode : Max. 60 ms
Pulse Rate (Hz)	0.5 - 10 Hz
Multi-Spots (12 sizes)*	2, 3, 5, 7, 8, 10, 12, 14, 16 mm Fractional (FRX) Ø10 mm, 3x10 mm
Emission Control	Finger Switch & Foot Switch
Cooling Type	Cryo ICD
Dimensions (mm) / Weight	417.6(W) x 950.3(L) x 1007.5(H) / 115kg
Electrical Rating	AC220-230 V, 50/60 Hz, Fuse: 250 V/30 A, Circuit Breaker: 30 A Power Consumption: 6.0 kVA

LUTRONIC EUROPE  
Lutronic Medical Systems Germany GmbH, Esplanade 41, 20354 Hamburg  
Office: +49 (0)40 6963 999 50, Fax: +49 (0)40 6963 999 59, Mail: europe@lutronic.com

LUTRONIC®  
Intelligent Care™

www.lutronic-europe.com

LUTRONIC®  
Intelligent Care™



DERMA V™

The Future is Green.



TECHNOLOGY

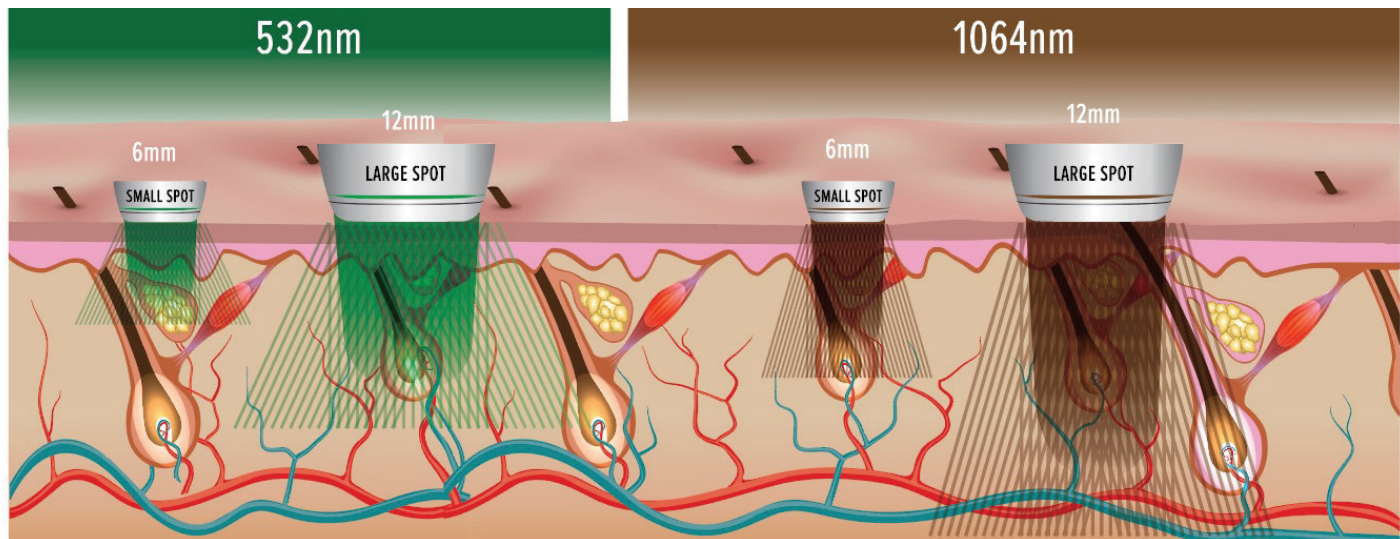
DERMA V™

Long-pulsed 532n KTP & 1064nm Nd:YAG Laser

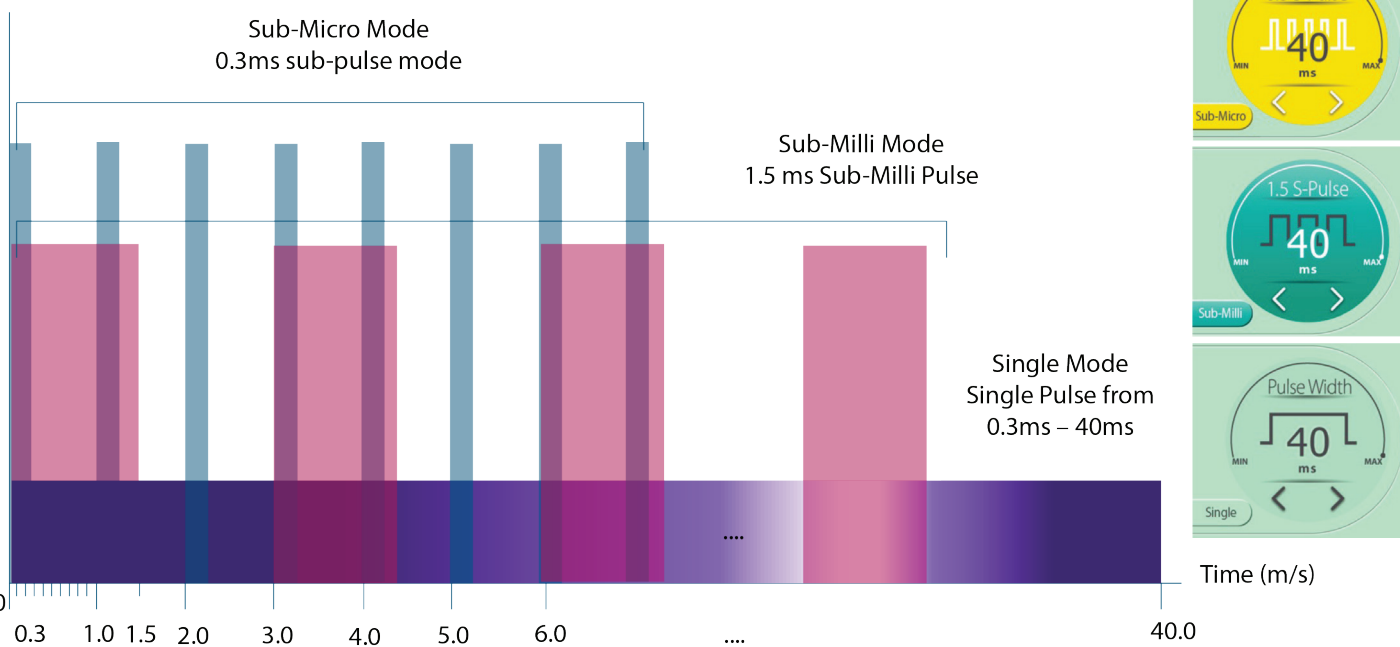
Derma V is a long-pulsed 532n KTP & 1,064nm Nd:YAG Laser with the latest technology such as Cryogen Cooling, Variable Sequential Pulsing Technology, and Real-Time Temperature Sensing, which incorporates 25 years of R&D know-how from Lutronic. DermaV was confirmed by the Health Insurance Review and Assessment Service as an “existing technology” subject to medical care and non-benefit for “the treatment of hematoma and port-wine stain using ND:yag laser” and obtained the result of being eligible for action benefits. We expect DermaV to be a good alternative treatment for patients suering from such diseases.



The Grand Unification – 595 & 532 in one platform



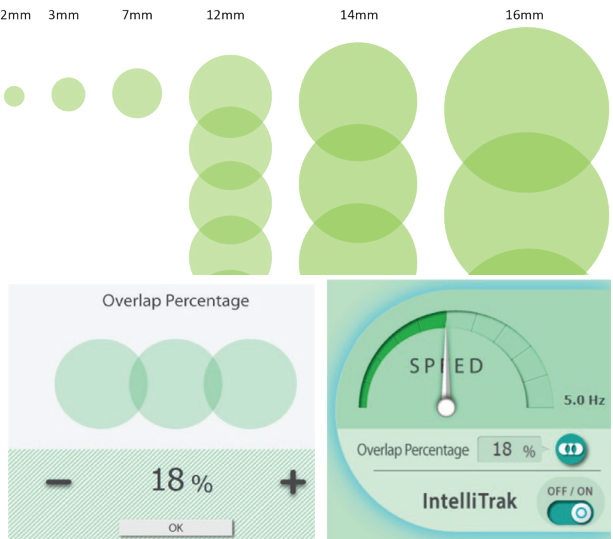
Welcome to the new age of Variable Sequential Pulsing!



FUNCTIONALITY

NEW: IntelliTrak™ Technology

IntelliTrak is designed to precisely deliver energy pulses at a user-selected overlap density with repetition rates from 2.4Hz to over 3Hz depending on chosen fluence and spot sizes ≥ 18mm. Lutronic’s IntelliTrak distance gauge tips provide system feedback based on the user’s rolling speed to help ensure complete and consistent treatment area coverage. LED lighting on the console and handpiece help inform the user about optimal rolling speed for fast treatments. DermaV with IntelliTrak technology allows users to fully harness the high-powered platform to achieve faster treatment speeds without sacrificing the quality, consistency or fluence delivered during treatment.

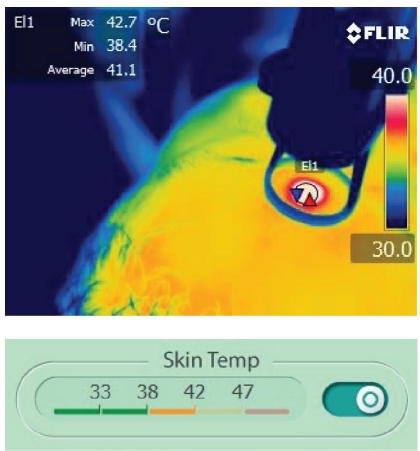


Real-Time Temperature Sensing

The DermaV provides real-time Temperature Sensing which is easy and intuitive. The LED on the handpiece reflects the corresponding colors on the screen for easy viewing during treatment. A practitioner may decide to treat an area with a few passes until they reach the 1<sup>st</sup> or 2<sup>nd</sup> yellow bar, and then shift to a new area and see the skin temperature range drop back to the 1<sup>st</sup> green bar. This additional real-time information can be a valuable tool to indicate safe endpoints.

1 <sup>st</sup> Green bar < 33°C	1 <sup>st</sup> Yellow bar < 42°C	1 <sup>st</sup> Red bar > 47°C
2 <sup>nd</sup> Green bar < 38°C	2 <sup>nd</sup> Yellow bar < 47°C	

The above preset temperature ranges can be adjusted based on user preference.



RESULTS

